



THE SCÈNE ÉTHIQUE STAGE DECK IS A SIGNIFICANT EVOLUTION IN THE DESIGN AND FABRICATION OF STAGE DECKS AND SCENIC STRUCTURES.

This ultra robust stage deck allows you to assemble stages:

- ▶ directly at ground level
- ▶ at heights of 12" to 30" using the QUAD PTL leg system
- ▶ at heights from 30" to multi-level staging using the OST staging system.

The Scène Éthique Stage Decks and all of the structural accessories are designed for both interior and exterior use. The QUAD PTL and OST systems can be used to quickly build safe stages on rough and uneven terrain.

The Stage Deck, as designed and fabricated by Scène Éthique, uses a 3/16" aluminum extrusion – the most robust of the staging industry. The Scène Éthique extrusion frames the edges of the plywood material that is used for the deck's surface offering an important protection for repeated set-ups, especially for exterior use.

The Scène Éthique Stage Deck is mechanically assembled allowing for simple in-the-field modifications and repairs. The use of intermediary support members gives a very high load capacity with great rigidity and minimal deflection. This is

Capacity

The Scène Éthique Stage Deck has a certified load capacity of up to 125 lbs per square foot for a 4' X 8' configuration with only four legs. The Scène Éthique Stage Deck has a point load capacity of up to 1,500 lbs on a 2" diameter surface with a deflection of ¼". Used with the QUAD PTL or the OST System, the pylon-like legs can easily adapt to uneven and rough terrain and allow the decks to easily span obstacles.

Dimensions

The standard Scène Éthique Stage Deck is available in 4' X 8'. Other dimensions are available. Curved shapes and non-rectangular shapes are available on request.

Materials and finish

The Scène Éthique Stage Deck is fabricated using aluminum extrusions with galvanized steel accessories. The surface is a ¾" painted plywood. Other finishes are available.

Transport

Scène Éthique Stage Decks can be stacked vertically, face-to-face, or on a dolly.

Certifications

The Scène Éthique Stage Deck is certified by a structural engineer to meet all North American codes.

especially appreciated for gymnastic and dance shows where a rigid stage with no perceptible deflection gives a greater sense of security and comfort to the performing artists.

The strength of the structure of the Stage Deck requires the use of only four legs per 4' X 8' deck allowing for quicker set-ups. Our proprietary PTL attachments work not only in horizontal force, but also in vertical force. This is unique to Scène Éthique stages and creates a diaphragm effect on the entire stage surface for increased structural integrity.

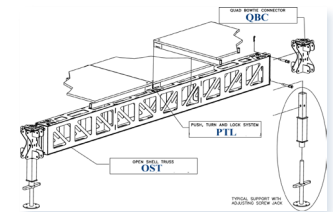
Accessories

A full range of accessories is available for the SED&F Stage Deck. These include:

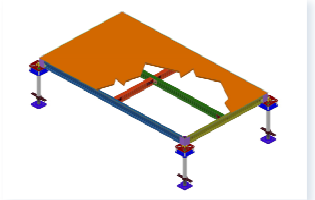
- ▶ Non standard deck adaptors
- ▶ Cantilevered deck adaptors
- ▶ Orchestra pit cover adaptors
- ▶ UBC code compliant guardrails
- ▶ Stairs
- ▶ Facings
- ▶ Chair rails
- ▶ Transport dollies
- ▶ Various leg heights

Patents

The OST Staging System (comprised of the OST / PTL and QBC) designed and fabricated by Scène Éthique is USA: US patent # 7,707,780 B2 Canada: patent pending # 2.536.893



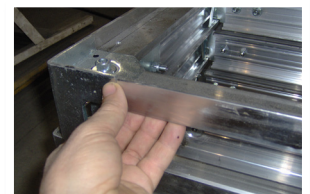
OST Staging System



QUAD PTL standard legs



Curved decks



Recessed extrusion and mechanical assembly



Ultra high load capacity